

web page

HERON[®]

LITE

Professional 3D mapping system.
Desktop software included.
Full control of SLAM parameters.
No extra fees for data processing.

- **Compact capture head**
- **Remarkable accuracy**
- **Non-rotating LiDAR for the best performance even in harsh conditions**

32-CHANNEL LiDAR SENSOR

120 | 300 m Max Range

PDA CONTROL UNIT

Wi-Fi connection to the Controller.
User-friendly interface.
Advanced acquisition of control points.
Real-time visualization.
Usable in the pocket too.

SMART CONTROLLER

- Remotely driven by PDA via Wi-Fi.
- Lightweight (**1085 g only**), compact, and detachable for flex configurations.
- Data storage on USB stick for privacy protection.
- Internal battery + swappable extra batteries for non-stop acquisitions.
- Rugged design available.

**Accessories available on request*



INSIDE THE WIRED
RUGGED BACKPACK*



WEARABLE OVER
THE SHOULDER



MOUNTED ON
ROBOTS & ROVERS

USABILITY

- **No initialization** and **calibration** procedures.
- **Control points** or control scans used **as constraints**.
- **Free mapping path** (patented algorithm).
- Loop closure not required.
- Compact capture head dockable to:
 - **backpacks**: ultra slim or wired and rugged
 - **telescopic poles**: for capturing cavities and inaccessible areas, even upside down.
 - **vehicles**: cars, bikes, rovers, robots, etc.
- Rugged PDA Pro control unit.
- **Real-time visualization** of point clouds generated during the acquisition.
- Designed to work in **extreme conditions**.
- Many accessories for very flexible use.

DATA PROCESSING

- **Accurate 3D models**.
- **Full professional control** of SLAM algorithm parameters.
- Point cloud editing software.
- Very dense point cloud rendering with multiple colour layers.
- **Direct export** of 3D point clouds and 2D maps in open formats and CAD platforms: LAS, E57 with images, **ReCap**, **AutoCAD**.
- Easy data export to **third-party software** (e.g. EdgeWise, Verity, Micromine, Surpac, TopoDOT).
- Data sharing on **cloud platforms**: Atis.cloud, Benaco, Cintoo Cloud, Geo-Plus, Topcon Collage Web.
- Advanced point cloud rendering which emphasizes **features and details**.

APPLICATIONS

Underground and Open Pit Mines As-Built

Tunnels Forests and Gardens Urban Areas

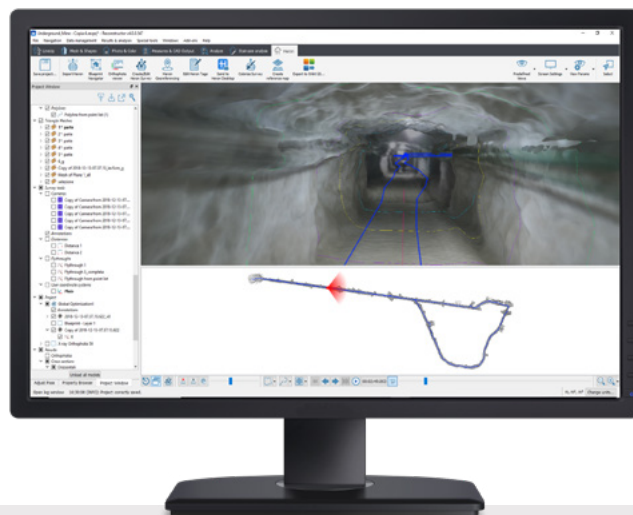
Indoors / Outdoors Mapping Geospatial

BIM Models Security / Defense Forensic

Volume Computation Multi-sensor Projects

Construction Sites Progress Monitoring

Cultural Heritage Cadastral Survey



DESKTOP SOFTWARE INCLUDED

Create . Navigate . Share



HERON Desktop® SLAM data post-processing

Software to convert HERON data into high-quality 3D point clouds. It contains patented SLAM algorithms; time bar to organise your processing as desired; filter of moving objects, and more. Advanced mode for the total control of SLAM algorithms' parameters. Use of control points and control scans as constraints.



Reconstructor® Advanced 3D point clouds analysis

Professional software for advanced point cloud management and editing. Data processing from HERON or from terrestrial/mobile/UAV laser sensors. Powerful automatic and target-less scans alignment. Data export to ReCap, E57 and various standard formats. Full compatibility with various third-party software and cloud platforms. RGB camera calibration, HERON survey navigation, mesh and DTM generation, volume computation, sections and profiles.



GoBlueprint® Manager of blueprint maps

Intuitive viewer of scaled X-ray images, designed to easily extract measurements (volumes, distances, areas) even by users not skilled in 3D. Compatible with any Windows-based tablet/PC. Free tool designed to be provided to end customers for convenient output management.

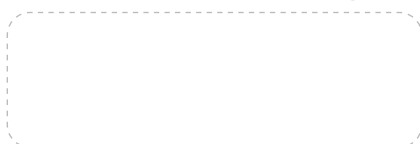
HERON is developed under a licence of the European Commission Joint Research Centre



Gexcel Srl | Brescia (Italy)
www.gexcel.it | sales@gexcel.it



Dealer's Contact



© Gexcel. All rights reserved.

HERON, Reconstructor, and GoBlueprint are Gexcel trademarks. Gexcel is not affiliated with any of third-party software listed on these pages. This document is intended for informational purposes only. Gexcel maintains the right to make changes to specifications and other information in this document at any time without prior notice. All trademarks mentioned belong to their respective owners. The use of trade names is for informational purposes only and does not imply any affiliation with or endorsement by the trademark holders.